



## 4UB UPRIGHT BIKE

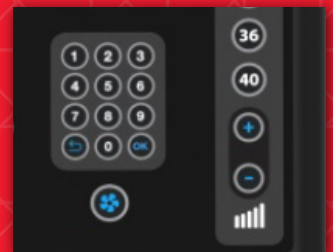
The 4-Series cardio line from Star Trac® is the perfect solution for the hospitality and multi-housing markets. With premium full color flat panel displays, quick select adjustment keys, and optional personal viewing screen, the 4 series provides smaller facilities with the look and performance of a full commercial product.

- Full color flat panel LCD display creates a premium user experience
- Quick Key selects for level allow for one-touch changes on the fly
- Walk-through design and intuitive wrap-around seat adjust allow users to access and change seat position with ease
- Contact and telemetry heart rate
- Integrated USB port provides charging capability for user devices
- Star Trac's popular personal fan for comfort
- Electrical requirements: unit can be operated self-generating or plugged in; PVS option requires 12V/5 Amp power supply
- 40 levels of resistance
- Powder-coated Steel frame

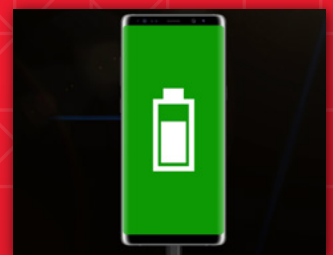
## FEATURES



FULL COLOR FLAT PANEL LCD DISPLAY CREATES A PREMIUM USER EXPERIENCE



QUICK KEY SELECTS FOR LEVEL ALLOW FOR ONE-TOUCH CHANGES ON THE FLY



INTEGRATED USB PORT PROVIDES CHARGING CAPABILITY FOR USER DEVICES



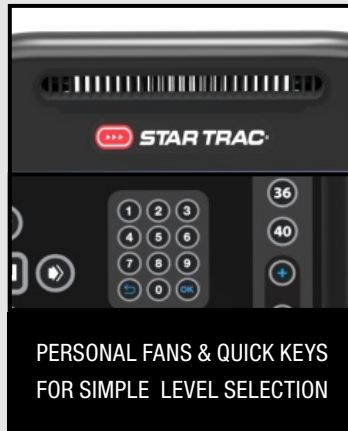
CONTACT AND TELEMETRY HEART RATE

# PRODUCT SPECS



4UB Upright Bike	
Primary SKUs	9-3190-MUNBP0
Weight	212 lb (96 kg)
Width	26" (66 cm)
Length	66" (168 cm)
Height	53" (135 cm)
User Weight Capacity	350 lbs (159 kg)

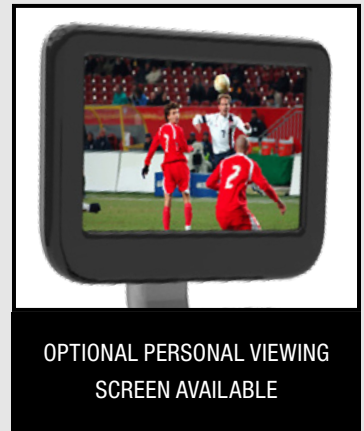
# CONSOLE FEATURES



PERSONAL FANS & QUICK KEYS  
FOR SIMPLE LEVEL SELECTION



COMPATIBLE WITH ECOFIT®  
ASSET MANAGEMENT SOLUTIONS



OPTIONAL PERSONAL VIEWING  
SCREEN AVAILABLE

## THE BRANDS MEMBERS ASK FOR BY NAME

Core Health & Fitness is the world's largest marketer and distributor of commercial fitness solutions, offering **top brands for every category**. Our purpose is to **innovate** by sharing our **passion for fitness performance**. To learn more about our portfolio of brands and fitness products visit: [corehealthandfitness.com](http://corehealthandfitness.com)

# CORE

---

## HEALTH & FITNESS



©2019 Core Health & Fitness LLC. All rights reserved. Star Trac, the Star Trac logo and StairMaster are registered trademarks of Core Health & Fitness, LLC. Schwinn and Nautilus are registered trademarks of Nautilus Inc. used under license to Core Health & Fitness LLC.